

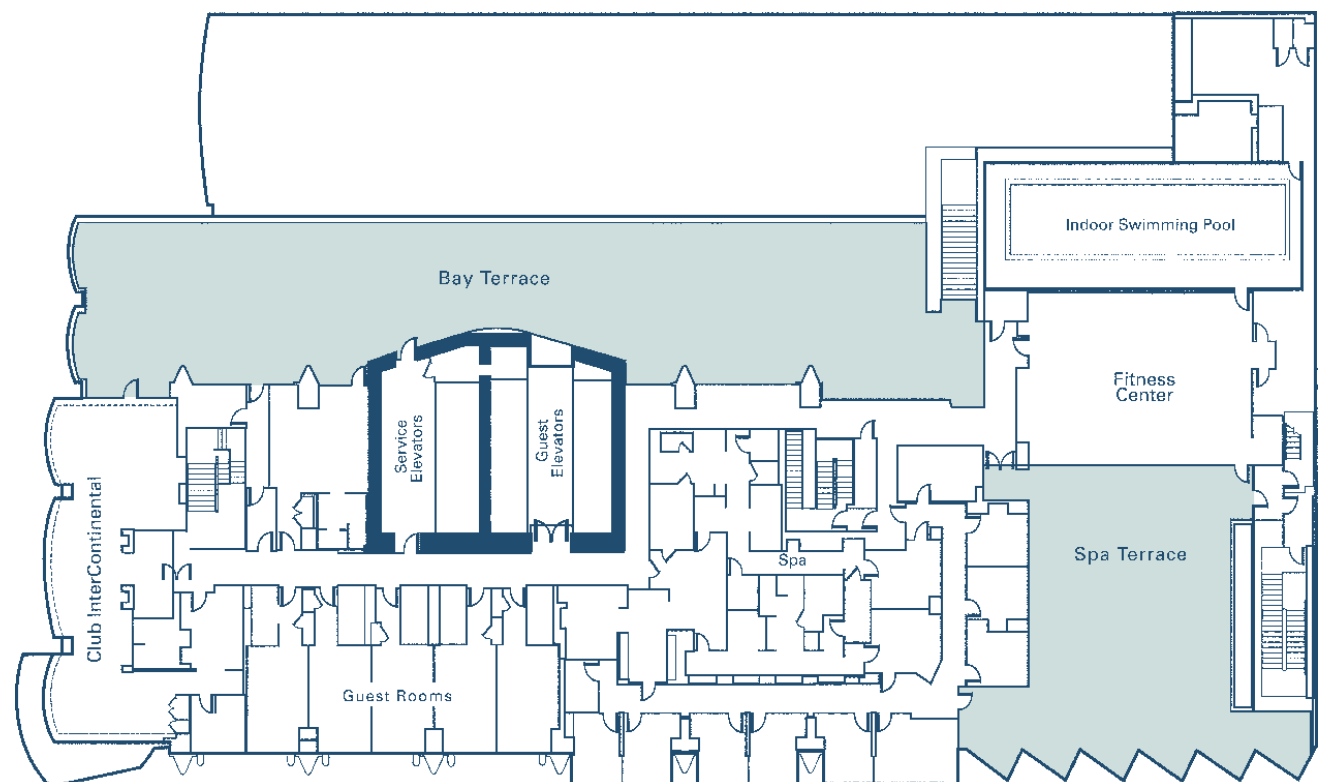
To us, it's all about matching our execution with your expectation.

NOT EVERY BUSINESS OR GUEST HAS THE SAME NEED. IN FACT, WE FIND NO TWO ARE EVER ENTIRELY ALIKE. SO WE HAVE APPROACHED THE CHALLENGE OF ACCOMMODATING EVERYONE BY BEING ADAPTABLE.

Our event facilities are spread over three expansive floors, consisting of two major customizable ballrooms and 21 smaller meeting rooms of varying size, all with natural light pouring in through floor-to-ceiling windows. Three adjoining outside terraces set a new standard for what an event can, and should, be.

SIXTH FLOOR

| ROOM NAME | Length | Width | Ceiling Height | Square Footage | Classroom (3 x 6) | Theatre | Conference | Reception | Banquet | U-shape | Hollow Square | Exhibit Space 8 X 10 | Exhibit Space 10 X 10 |
|-------------|--------|-------|----------------|----------------|-------------------|---------|------------|-----------|---------|---------|---------------|----------------------|-----------------------|
| Bay Terrace | 184' | 28' | n/a | 5,152 | n/a | n/a | n/a | 500 | 320 | n/a | n/a | n/a | n/a |
| Spa Terrace | 50' | 48' | n/a | 2,400 | n/a | n/a | n/a | 250 | 160 | n/a | n/a | n/a | n/a |



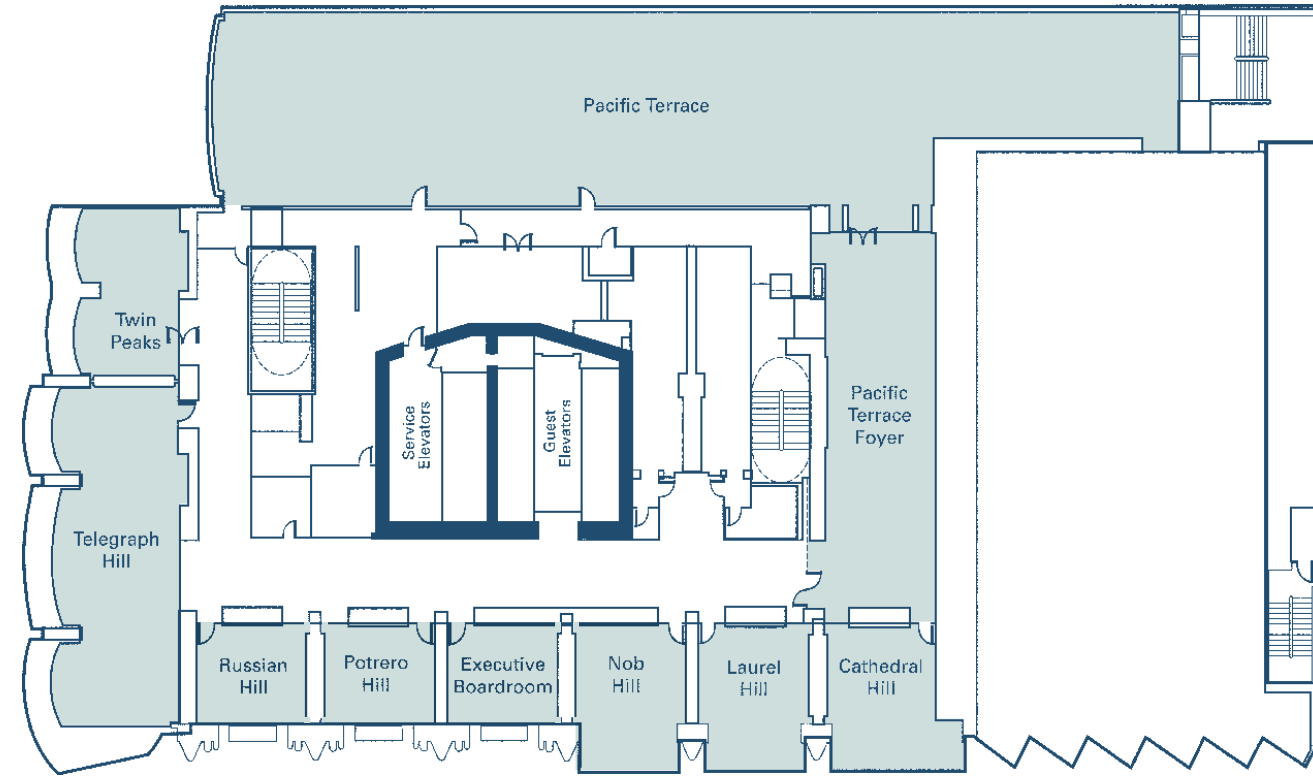
Do you live an InterContinental Life?



888 Howard Street
 San Francisco, CA 94103 United States
 TEL +1 888 811 4273
www.intercontinentalsanfrancisco.com

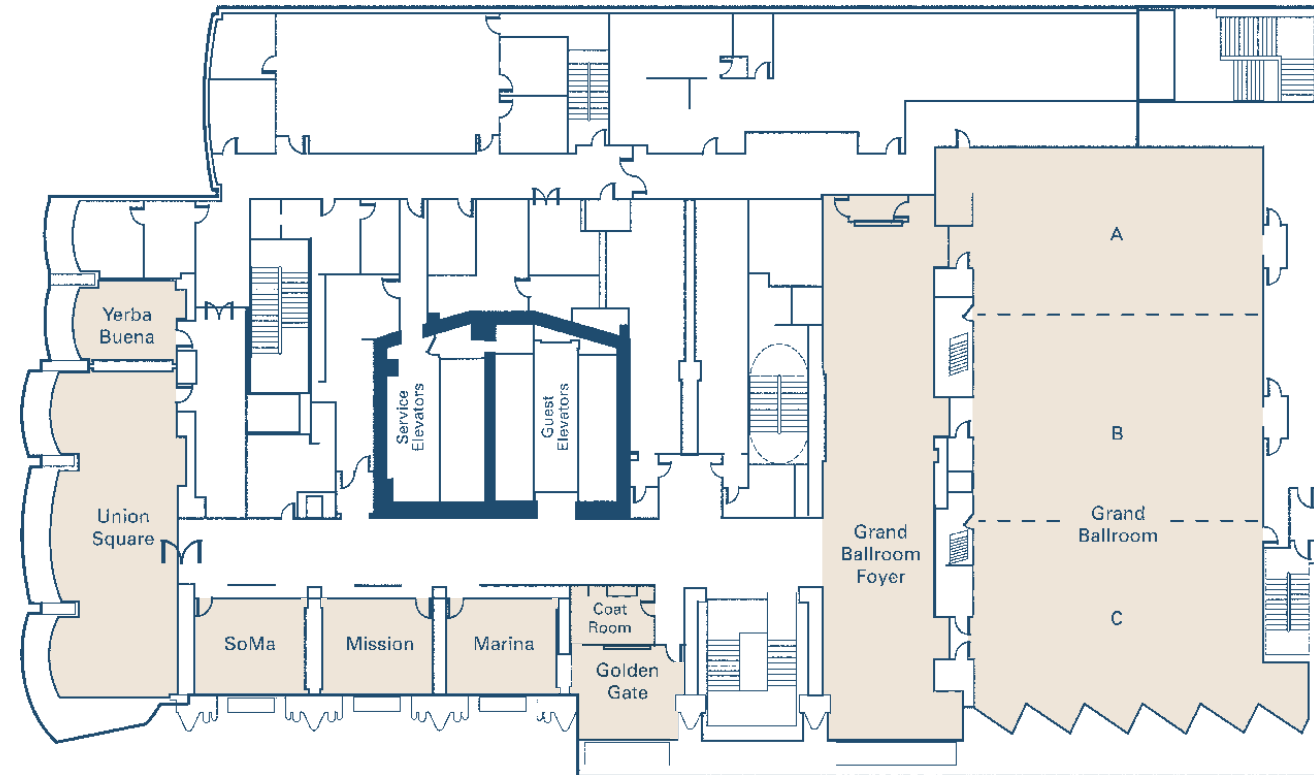
THIRD FLOOR

| ROOM NAME | Length | Width | Ceiling Height | Square Footage | Classroom (3 x 6) | Theatre | Conference | Reception | Banquet | U-shape | Hollow Square | Exhibit Space 8 X 10 | Exhibit Space 10 X 10 |
|----------------------|--------|-------|----------------|----------------|-------------------|---------|------------|-----------|---------|---------|---------------|----------------------|-----------------------|
| Grand Ballroom | 103' | 63' | 20' | 6,800 | 405 | 870 | 96 | 1,000 | 540 | 119 | 118 | 31 | 26 |
| Grand Ballroom A | 30' | 63' | 20' | 1,890 | 108 | 208 | 46 | 200 | 150 | 54 | 58 | 12 | 10 |
| Grand Ballroom A & B | 67'6" | 63' | 20' | 4,253 | 216 | 448 | 60 | 575 | 360 | 78 | 88 | 24 | 20 |
| Grand Ballroom B | 37'6" | 63' | 20' | 2,363 | 120 | 260 | 54 | 300 | 180 | 62 | 70 | 12 | 10 |
| Grand Ballroom B & C | 73' | 63' | 20' | 4,600 | 240 | 450 | 60 | 600 | 360 | 80 | 94 | 24 | 16 |
| Grand Ballroom C | 35'6" | 63' | 20' | 2,237 | 120 | 228 | 54 | 250 | 180 | 62 | 70 | 12 | 10 |
| Grand Ballroom Foyer | 94' | 24' | n/a | 2,350 | n/a | n/a | n/a | 250 | n/a | n/a | n/a | 12 | 6 |
| Golden Gate | 20'6" | 16' | 10' | 328 | 12 | 28 | 18 | n/a | 20 | 14 | 22 | n/a | n/a |
| Marina | 24' | 17' | 10' | 408 | 24 | 40 | 18 | n/a | 30 | 23 | 22 | n/a | n/a |
| Mission | 24' | 17' | 10' | 408 | 24 | 40 | 18 | n/a | 30 | 23 | 22 | n/a | n/a |
| SoMa | 24' | 17' | 10' | 408 | 24 | 40 | 18 | n/a | 30 | 23 | 22 | n/a | n/a |
| Union Square | 59'6" | 26'6" | 10' | 1,577 | 78 | 143 | 48 | 150 | 100 | 50 | 58 | n/a | n/a |
| Yerba Buena | 14'6" | 22' | 10' | 319 | 18 | 39 | 16 | n/a | 20 | 11 | 22 | n/a | n/a |



FIFTH FLOOR

| ROOM NAME | Length | Width | Ceiling Height | Square Footage | Classroom (3 x 6) | Theatre | Conference | Reception | Banquet | U-shape | Hollow Square | Exhibit Space 8 X 10 | Exhibit Space 10 X 10 |
|---------------------------------|--------|-------|----------------|----------------|-------------------|---------|------------|-----------|---------|---------|---------------|----------------------|-----------------------|
| InterContinental Ballroom | 83' | 62'6" | 13' | 5,600 | 312 | 707 | 78 | 800 | 480 | 92 | 100 | 30 | 25 |
| InterContinental Ballroom A | 25' | 62'6" | 13' | 1,563 | 90 | 195 | 54 | 150 | 120 | 64 | 52 | 8 | 8 |
| InterContinental Ballroom A & B | 49' | 62'6" | 13' | 3,063 | 192 | 300 | n/a | 300 | 300 | 74 | 88 | 18 | 15 |
| InterContinental Ballroom B | 24' | 62'6" | 13' | 1,570 | 90 | 180 | 54 | 150 | 120 | 64 | 52 | 8 | 8 |
| InterContinental Ballroom B & C | 58' | 62'6" | 13' | 3,625 | 192 | 350 | n/a | 300 | 300 | 74 | 88 | 24 | 20 |
| InterContinental Ballroom C | 34' | 62'6" | 13' | 2,125 | 96 | 234 | 54 | 150 | 180 | 64 | 64 | 12 | 10 |
| InterContinental Ballroom Foyer | 94' | 24' | n/a | 2,256 | n/a | n/a | n/a | 250 | n/a | n/a | n/a | 12 | 12 |
| Fremont | 24' | 25' | 12' | 600 | 27 | 55 | 18 | n/a | 40 | 26 | 28 | n/a | n/a |
| Howard | 24' | 25' | 12' | 600 | 27 | 55 | 18 | n/a | 40 | 26 | 28 | n/a | n/a |
| Jackson | 24' | 17' | 12' | 408 | 24 | 40 | 18 | n/a | 20 | 23 | 22 | n/a | n/a |
| Montgomery | 24' | 17' | 12' | 408 | 24 | 40 | 18 | n/a | 20 | 23 | 22 | n/a | n/a |
| Patri | 24' | 17' | 12' | 408 | 24 | 40 | 18 | n/a | 20 | 23 | 22 | n/a | n/a |
| Stockton | 28' | 17' | 12' | 476 | 24 | 42 | 24 | n/a | 30 | 23 | 22 | n/a | n/a |
| Sutter | 48' | 23' | 12' | 1,104 | 42 | 88 | 25 | 100 | 80 | 30 | 52 | n/a | n/a |



FOURTH FLOOR

| ROOM NAME | Length | Width | Ceiling Height | Square Footage | Classroom (3 x 6) | Theatre | Conference | Reception | Banquet | U-shape | Hollow Square | Exhibit Space 8 X 10 | Exhibit Space 10 X 10 |
|-----------------------|--------|-------|----------------|----------------|-------------------|---------|------------|-----------|---------|---------|---------------|----------------------|-----------------------|
| Pacific Terrace | 159' | 34' | n/a | 5,406 | n/a | n/a | n/a | 700 | 350 | n/a | n/a | n/a | n/a |
| Pacific Terrace Foyer | 66' | 24' | n/a | 1,584 | 72 | 130 | 54 | 150 | 100 | 56 | 52 | n/a | n/a |
| Cathedral Hill | 24' | 25' | 10' | 600 | 32 | 55 | 24 | n/a | 40 | 26 | 28 | n/a | n/a |
| Laurel Hill | 24' | 25' | 10' | 600 | 32 | 55 | 24 | n/a | 40 | 26 | 28 | n/a | n/a |
| Nob Hill | 24' | 25' | 10' | 600 | 32 | 55 | 24 | n/a | 40 | 26 | 28 | n/a | n/a |
| Potrero Hill | 17' | 24' | 10' | 408 | 24 | 40 | 18 | n/a | 30 | 23 | 22 | n/a | n/a |
| Russian Hill | 17' | 24' | 10' | 408 | 24 | 40 | 18 | n/a | 30 | 23 | 22 | n/a | n/a |
| Telegraph Hill | 59'6" | 26'6" | 10' | 1,577 | 78 | 160 | 48 | 150 | 100 | 50 | 46 | n/a | n/a |
| Twin Peaks | 29' | 23'6" | 10' | 682 | 21 | 60 | 24 | n/a | 40 | 23 | 15 | n/a | n/a |
| Executive Boardroom | 24' | 17' | 10' | 408 | n/a | n/a | n/a | n/a | n/a | n/a | n/a | n/a | n/a |

